

BUSINESS COMPANY PROFILE



TABLE OF CONTENTS

3**Introduction****4****Vision & Mission****5****Core Values****6****Solutions****11****Industrial Safety Solutions****13****Key Projects****15****Safety and Quality Assurance****16****Membership****17****Organogram****18****Client List****21****Partner Brands****22****Portfolio**

INTRODUCTION



A Brief Story About The Company

Founded in 2012, SISTECH (BD) has quickly become one of Bangladesh's leading end-to-end contracting companies. Established by a team of highly qualified and experienced engineers, we are committed to adopting the best engineering practices to serve our clients. Our management team, composed of experts with national and international experience, excels in electrical, mechanical, and plumbing works. Specializing in detailed engineering, procurement, construction, and maintenance of MEP projects, we have contributed to significant projects such as the Padma Bridge and Dhaka Metro.



VISION

We aim to become a benchmark for safety and security in the industry, continually improving our practices to ensure the utmost protection for our clients and their assets. We want to address market demands with comprehensive engineering solutions delivered by top-tier professionals. We are committed to high-quality execution, timely project completion, and a personalized approach tailored to each client's unique requirements.



MISSION

01

To establish ourselves as a leader in electro-mechanical works, firstly nationally within Bangladesh and then expand globally.

03

To continuously innovate, develop, and adopt cutting-edge technologies in methods and materials, thereby enhancing productivity and cost efficiency.

02

To become the preferred choice for customers by achieving excellence in quality and delivering value-added projects on time.

04

To prioritize safety and security in all our projects, ensuring the highest standards of protection for our clients and their assets.

CORE VALUES

Core values and culture that we dearly adhere to and teach all the generation of stakeholders

01

RESPECT

We value diverse perspectives of our clients, partners, employees, and stakeholders with the utmost respect.

02

PROFESSIONALISM

Demonstrating expertise, reliability, and ethical behavior in every aspect of our work..

03

SAFETY

Committing to the highest safety standards to ensure the well-being of our employees and clients.

04

EXCELLENCE

Striving for superior quality and continuous improvement in every project and service we provide.

05

INTEGRITY

Upholding the highest standards of honesty and transparency in all our actions and decisions.

06

TEAMWORK

Fostering a collaborative and inclusive environment where diverse talents and perspectives are valued.

SOLUTIONS

SISTECH (BD) offers a wide range of cutting-edge products and services designed to meet the diverse needs of our clients in various sectors. Our offerings include advanced fire safety solutions, comprehensive security systems, automation engineering, and communication technologies.



Fire Safety

SISTECH (BD) offers comprehensive fire safety solutions to protect lives and property. Our products are designed to detect, control, and extinguish fires promptly, ensuring safety and minimizing damage.

1. Fire Detection System
2. Fire Hydrant & Sprinkler System
3. Fire Rated Penetration System
4. Fire Rated Gypsum Drywall
5. Fire Rated Gypsum Ceiling
6. FM200 Clean Agent Fire Suppression System
7. Co2 Clean Agent Fire Suppression System
8. Fire Rated Expansion Joint
9. Fire Rated Paint
10. Fire Damper
11. Fire Extinguisher



SOLUTIONS



CCTV Camera Surveillance

Our advanced CCTV camera surveillance systems provide high-quality video monitoring to enhance security and surveillance capabilities. Our systems ensure comprehensive coverage for different environments and needs.

1. IP CCTV Camera
2. IP Crosse Line CCTV Camera
3. IP Panoramic CCTV Camera
4. PTZ Security Camera
5. HD CCTV Camera



Time Attendance & Access Control System

We offer state-of-the-art systems for tracking time and managing access control, ensuring efficient and secure operations. These systems improve workplace security and streamline administrative tasks.

1. Face Recognition Attendance System
2. Biometric & RFID Attendance System

SOLUTIONS



Security Access Control System

Our security access control solutions provide thorough screening and secure access to various facilities. These systems are essential for maintaining safety and preventing unauthorized entry.

1. Metal Security Door (Archway)
2. Hand Held Metal Detector
3. Baggage Scanner
4. Vehicle Scanner



Automation Engineering

SISTECH (BD) provides a range of automation engineering products to enhance security and efficiency in access control and traffic management. Our solutions are designed to automate and streamline processes, improving safety and convenience

1. Automatic Extension Gate
2. Automatic Flap Barrier
3. Automatic Tripod Barrier
4. Full Height Turnstile Barrier
5. Parking Boom Barrier
6. Road Bollard

SOLUTIONS



PABX & Intercom System

We offer reliable communication systems to facilitate seamless internal and external communication within organizations. Our PABX and intercom systems ensure clear and effective communication, essential for operational efficiency

1. IP Based PABX System
2. Analog PABX System
3. Video Intercom System



Lightning Protection System

Our lightning protection systems safeguard buildings and structures from lightning strikes, minimizing the risk of damage and ensuring safety. These systems effectively divert lightning currents, providing reliable protection.

SOLUTIONS



Public Announcement & Conference System

We provide high-quality public announcement and conference systems for clear and effective communication in various environments. These systems are essential for public safety announcements and facilitating organized meetings.



Video Conference System

Our advanced video conference systems facilitate seamless virtual meetings with high-quality video and audio, ensuring effective communication and collaboration. These systems are designed to meet the needs of modern businesses and remote work environments.

INDUSTRIAL SAFETY SOLUTIONS



Personnel Protective Equipment (PPE)

SISTECH (BD) offers a comprehensive range of personnel protective equipment (PPE) designed to ensure the safety and well-being of workers in various industrial settings. Our PPE products are engineered to provide maximum protection and comfort, enhancing workplace safety and compliance

1. Dropped Object Prevention Solutions
2. Emergency Eyewash and Shower
3. Ergonomics
4. Eye and Face Protection
5. Fall Protection
6. First Aid
7. Hand Protection
8. Head Protection
9. Hearing Protection
10. Heat Stress Solutions
11. High Visibility Products
12. Instruments
13. Protective Apparel
14. Respiratory Protection
15. Safety Signs and Labels
16. Warning Devices

INDUSTRIAL SAFETY SOLUTIONS



Access Equipments

We provide reliable access equipment to ensure safe and efficient operations in industrial and construction environments. Our products are designed for durability and safety, facilitating access for various tasks.

1. Ladder
2. Aluminum Custom Scaffolding
3. Electric & Hybrid Boom Lifts



Other Products

Our additional products include basket stretchers, lockout tagout devices, security mirrors, and barricade tapes. These items provide essential safety and security solutions for various applications.

1. Basket Stretcher
2. Lockout Tag Out Devices
3. Security Mirror
4. Barricade Tapes

KEY PROJECTS

Dhaka Metro Rail

SISTECH (BD) played a crucial role in the development of the Dhaka Metro Rail project, which is a significant milestone in Bangladesh's transportation infrastructure. Our scope of work for this project included the installation of advanced fire detection and alarm systems to ensure early detection of fire hazards and prompt evacuation, enhancing passenger safety. We also implemented an efficient fire hydrant and sprinkler system designed to control and extinguish fires, providing robust protection across the metro facilities. Additionally, we deployed state-of-the-art fire suppression systems, including clean agent solutions, to safeguard critical areas and equipment from fire damage. The installation of fire-rated doors was another key aspect of our work, aimed at containing the spread of fire and smoke, ensuring safe evacuation routes, and protecting lives and property within the metro stations.



KEY PROJECTS

Metro Rail Exhibition and Information Center

SISTECH (BD) successfully deployed a comprehensive security system for the Metro Rail Exhibition and Information Centre at Diabari, Uttara, Dhaka. This key project involved the installation of an advanced fire detection and control system, ensuring the safety of the facility and its visitors. Additionally, we implemented a state-of-the-art CCTV surveillance system, access gates, and scanners, providing robust security and controlled access throughout the center. Our work on this project exemplifies our ability to deliver integrated security solutions for high-profile and complex environments, reinforcing the safety and security of vital public infrastructure.



Padma Bridge

The Padma Bridge project is one of the largest and most significant infrastructure projects in Bangladesh, aimed at improving connectivity and fostering economic growth. SISTECH (BD) contributed to this monumental project by providing our expertise in MEP (Mechanical, Electrical, and Plumbing) works. Our involvement included designing and executing comprehensive engineering solutions for the bridge's infrastructure. We also implemented advanced safety and security systems to ensure the bridge's operational integrity and the safety of its users. Furthermore, we provided maintenance services to ensure the longevity and reliability of the installed systems, supporting the bridge's role as a critical transportation link.





SAFETY AND QUALITY ASSURANCE

At SISTECH (BD), we place the highest priority on quality and safety in every project we undertake. Our commitment to the highest standards is reflected in our comprehensive quality assurance & safety protocols, certifications, and exceptional safety record.

Commitment to Quality and Safety Standards

Our commitment to quality and safety is embedded in our organizational culture. We adhere to stringent quality control measures and safety standards throughout the project lifecycle. From initial planning to final execution, every phase is meticulously monitored to ensure compliance with national and international standards.

Certifications and Accreditations



MEMBERSHIP

SISTECH (BD) is a proud member of the Fire Fighting Equipment Business Owners Association of Bangladesh (FEBOAB). FEBOAB is the premier organization representing businesses involved in the fire safety and firefighting equipment industry in Bangladesh. Our membership in FEBOAB underscores our commitment to upholding the highest standards in fire safety and aligns us with the leading experts and companies in this critical sector.



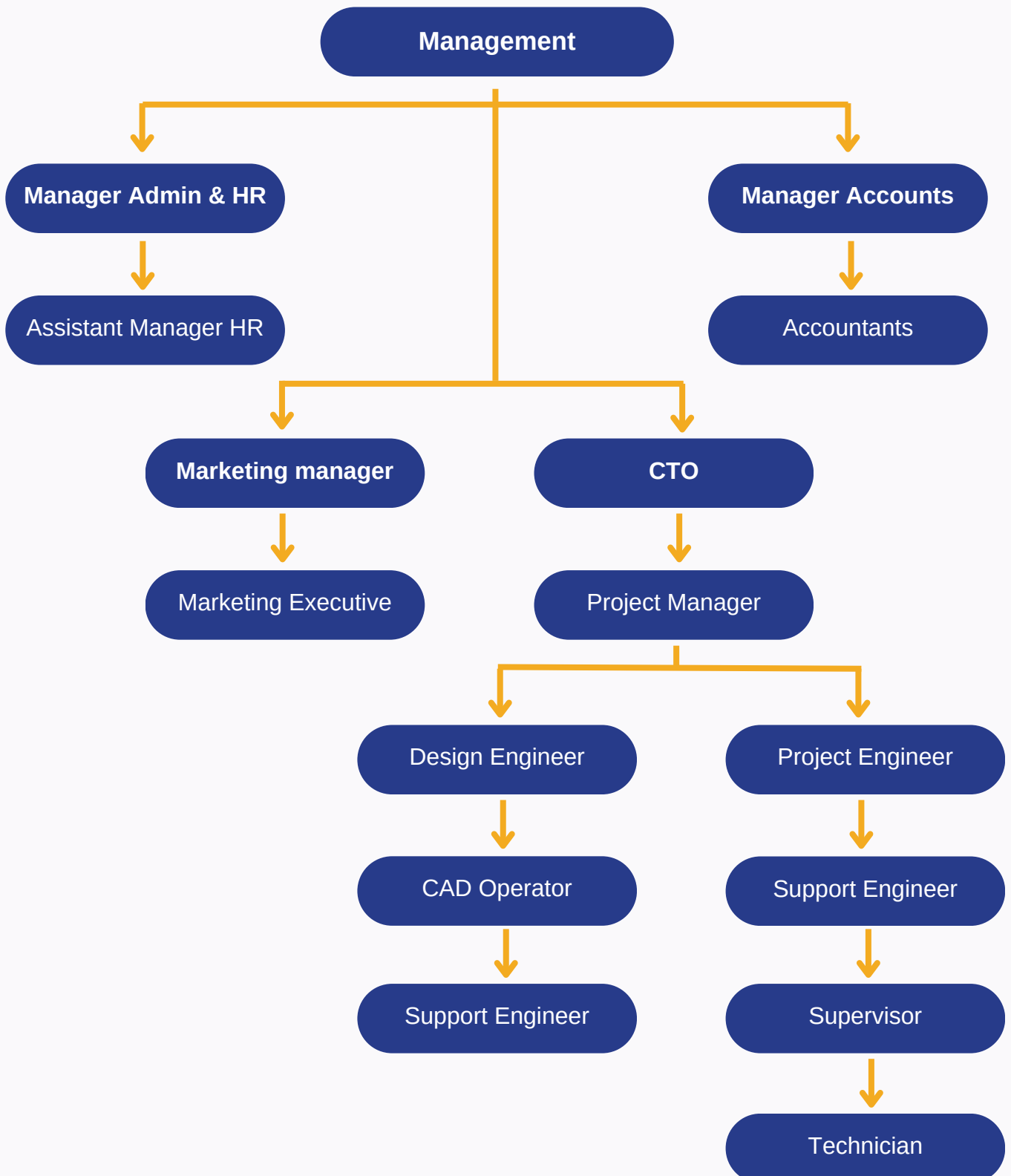
As a member of FEBOAB, we stay informed about the latest industry trends, regulations, and technological advancements. This affiliation also allows us to collaborate with other industry leaders to promote best practices and advocate for enhanced fire safety standards across the nation. Our involvement with FEBOAB further solidifies our dedication to providing top-quality fire safety solutions, ensuring that our clients benefit from the most advanced and reliable fire protection systems available.

Safety Records

Our exemplary safety record is a testament to our rigorous safety protocols and our proactive approach to risk management. We prioritize the safety of our employees, clients, and all stakeholders involved in our projects. By fostering a safety-first culture, providing continuous training, and implementing robust safety measures, we have successfully maintained an outstanding safety record. This not only ensures the well-being of our team but also contributes to the timely and efficient completion of our projects without incidents or disruptions.



ORGANOGRAM



CLIENT LIST

Sl.	Company Name
1.	Pubali Bank
2.	Benapol Pourosova
3.	Impress Fashion
4.	Joowan Global Fashion (BD) Ltd.
5.	Fiat Fashion Ltd.
6.	Q-Point Fashion Ltd.
7.	Jeans Manufacturing Co. Ltd.
8.	Carlos Leather Fashion Ltd.
9.	Link Fashion
10.	Mondol Knitwear Ltd.
11.	Lista Fashion
12.	BK Apparel Ltd.
13.	K. Morium Garments Ltd.
14.	Denier Fashion Ltd.
15.	DGN Apparels Ltd.

Sl.	Company Name
16.	Alliance Group
17.	Apparel Export Ltd.
18.	S.P.M Design Ltd.
19.	Novimoda Knitwear Ltd.
20.	Classy. Net
21.	Rabbi Group
22.	Accord Fashion & Textile Ltd
23.	Path Finder Designers Ltd.
24.	Wahab Jute Mills Limited
25.	SS business corporation ltd
26.	Run Trade Communication
27.	Bangladesh Betar
28.	Grameenphone.
29.	Fortune Enterprise
30.	MGM Communication

CLIENT LIST

Sl.	Company Name
31.	BAC University
32.	Dazzling Textile Ind. Ltd.
33.	Brothers Fashion Ltd.
34.	Universal Dental Clinic
35.	Exquisite ICT Ltd
36.	Hypertech solution bd
37.	H.N Apparels Ltd.
38.	Fakir Garments Ltd
39.	SM Knitwear Limited
40.	JM Fabrics
41.	Sinpho Libratory
42.	Rahmat Group
43.	Loggos Design
44.	Pantalon
45.	Best Shirt

Sl.	Company Name
46.	Onaus Group
47.	Pintu Pac
48.	Viyellatex Group
49.	Ecocotor
50.	LMS
51.	ISLM
52.	Ecofeb
53.	Interfabe
54.	Mondol Fashion
55.	SM Knit Wear
56.	Jalalabad Steel
57.	ADA Trading Bangladesh Limited
58.	La Meridian Hotel
59.	A.H Packaging
60.	Al Noor Eye Hospital

CLIENT LIST

Sl.	Company Name
61.	Bangladesh Film Archive
62.	Catton Filed
63.	GEC Elevator Ltd
64.	Dica Tex Limited
65.	HIFS Agro Food Industries
66.	Molla Bari Callan Shomiti
67.	Runner Group
68.	Shatkhira Technical
69.	Pirojpur Technical
70.	Sheikh Fozilatunnesa Mujib Mohila Technical Training Center
71.	Tangail Cantonment
72.	Union Group
73.	Public Works Department (PWD), Judicial Officer Building

Sl.	Company Name
74.	Padma Multipurpose Bridge Project
75.	Union Group
76.	Metro Rail Project (Line 3)
77.	Jalalabad Steel
78.	Bangladesh Power Development Board (BPDB)
79.	Water Supply and Sewerage Authority (WASA)
80.	Public Works Department (PWD),
81.	Asian Network of Research on Antidiabetic Plants (ANRAP)
82.	Union Group
83.	SAM REE DYEING (BD) LTD
84.	ACI Health Care Limited

PARTNER BRANDS



PORTFOLIO

Sprinkler & Hydrant System



PORTFOLIO

Alarm & Detection System



PORTFOLIO

FM-200 System



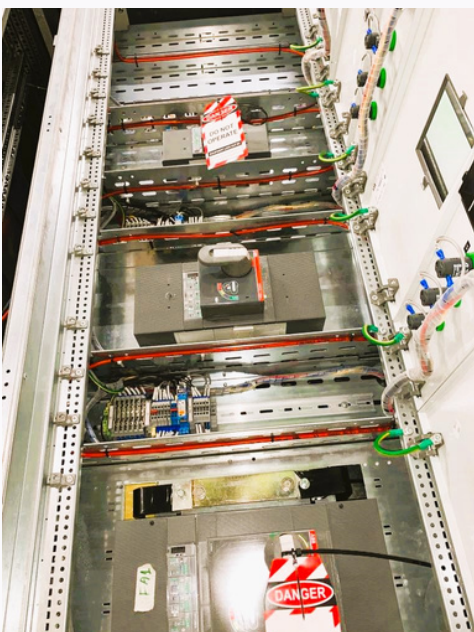
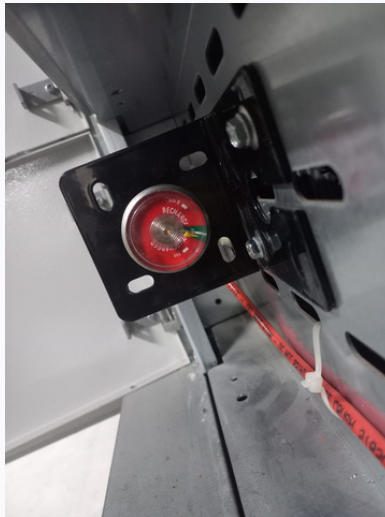
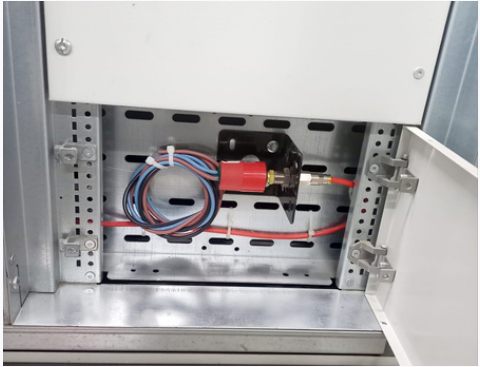
PORTFOLIO

Fire Barrier System



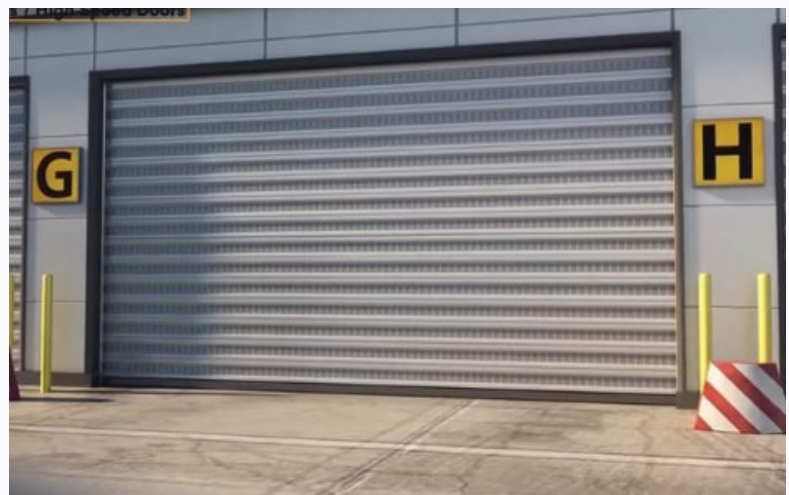
PORTFOLIO

NOVEC 1230 System



PORTFOLIO

Automated Shutter Door





CONTACT US

Because, we're here to help

For more information or to discuss your specific needs, please feel free to contact us. Our team of experts is ready to assist you with tailored solutions that meet your exact requirements.

Address

187 (1st Floor), Greenroad, Kalabagan, Dhanmondi, Dhaka-1205, Bangladesh

Telephone

01714491566; 01914801713

E-mail

info@sistechbd.com

Website

www.sistechbd.com